



Flight Plan & Site Survey

Created using **RPAS Wilco**[®]

Operation Name:	OREO S Gower Boundary Rd
Pilot Name:	██████████
Pilot Certificate:	██████████
Flight Start:	January 22, 2023 12:51 PM
Flight End:	January 22, 2023 2:51 PM
Flight Area (Latitude):	45° 5' 21.80" N (45.089)
Flight Area (Longitude):	75° 35' 45.80" W (-75.596)
Altitude - Radius:	Alt: 700 ft - Rad: 926.0 m (0.5 nm)
Airspace:	ADVISORY
FIR - Contact:	CZUL - 506-867-7173
Weather:	-1.6 Celsius - Snow, Overcast

Please ensure you received all required authorizations prior to flight.

Disclaimer

This Site Survey was created using RPAS Wilco by AIM Robotics. The flight plan contained is intended only for RPAS flights on the date/time and location specified. The user accepts all responsibility for the accuracy and completeness of the information contained.

For the complete Terms & Conditions, see

<https://rpswilco.com/#/tnc>



Included

- Site Survey
- Obstacles (if available)
- Nearby Aerodromes
- Canadian Aviation Regulations
- GFA
- Aerodrome Supplements
- METAR & TAF (if available)
- NOTAMS
- CFS

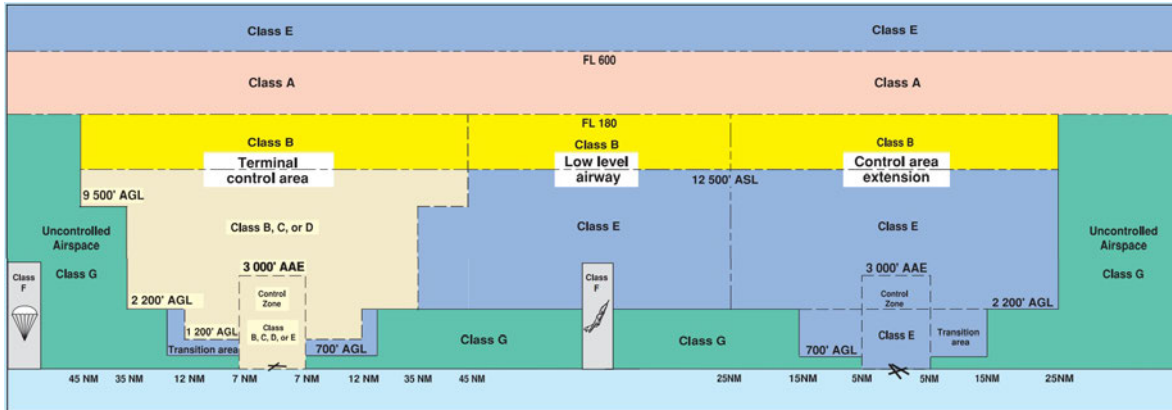
Flight Map



MAP Details

	Latitude	Longitude
 MODEL	45° 5' 21.80" N (45.089)	75° 35' 45.80" W (-75.596)
 Pilot	45° 5' 25.40" N (45.0904)	75° 35' 49.40" W (-75.5971)

Airspace Classification



Overlying Airspaces

Class	Name	Floor	Ceiling
E	Montreal FIR CAE	6000MSL	12500MSL
B	Montreal FIR CAE	12500MSL	18000MSL
E	Ottawa, ON CAE	2500MSL	12500MSL
B	Ottawa, ON CAE	12500MSL	18000MSL
E	Ottawa XPNDR MANDTRY	6500MSL	12500MSL
F	CYA528(S)(T) KEMPTVILLE, ON OCSL daylight by NOTAM	SFC	4000MSL
E	T634 Airway	2200AGL	12500MSL
B	T634 Airway	12500MSL	18000MSL
B	Ottawa, ON TCA	12500MSL	18000MSL
C	Ottawa, ON TCA	5000MSL	12500MSL
C	Ottawa, ON TCA	4000MSL	5000MSL
C	Ottawa, ON TCA	3000MSL	4000MSL
C	Ottawa, ON TCA	2500MSL	3000MSL
E	T781 Airway	2200AGL	12500MSL
B	T781 Airway	12500MSL	18000MSL

Nearest Aerodromes & Distance from Operation

RIDEAU VALLEY AIR PARK (CPL3 AERODROME Reg)	Lat: 45.1	Long: 75.633	3.131 KM	1.69 NM
OTTAWA (WINCHESTER DISTRICT MEMORIAL HOSPITAL) (CWH4 HELIPORT Cert)	Lat: 45.088	Long: 75.354	19.003 KM	10.26 NM
MACDONALD CARTIER INTL (CYOW AERODROME Cert)	Lat: 45.323	Long: 75.667	26.564 KM	14.34 NM
EMBRUN (CPR2 AERODROME Reg)	Lat: 45.241	Long: 75.299	28.75 KM	15.52 NM

Weather Information for Mission Day

Summary: Cloudy skies throughout the day with late afternoon snow.

Condition	Temperature	Precipitation	Visibility	Humidity
-----------	-------------	---------------	------------	----------

		Feels Like			Cloud Coverage	Wind Speed	
Snow, Overcast	1.6 Celsius	3.4 Celsius	77.0 %	10.5 Km	97.6 %	17.3 kph	93.5 %

ONTARIO

AERODROME/FACILITY DIRECTORY

KARS / RIDEAU VALLEY AIR PARK ON

CPL3

REF	N45 06 W75 38 3S 14°W UTC-5(4) Elev 286' A1905 A5000 A5002	
OPR	Chris Williams 613-296-3391 Reg PPR	
PF	C-1,2,4,5 D-3,6	
FLT PLN FIC	(bil) Québec 866-GOMÉTÉO or 866-WXBRIEF (Toll free within Canada) or 866-541-4105 (Toll free within Canada & USA)	
RWY DATA RCR	Rwy 08/26 1800x100 turf Opr No win maint. May be soft in spring.	
COMM ATF	tfc 123.4 5NM 3300 ASL excluding the airspace that lies within Ottawa TCA class C airspace	
PRO	Glider activity in area.	

ONTARIO

AERODROME/FACILITY DIRECTORY

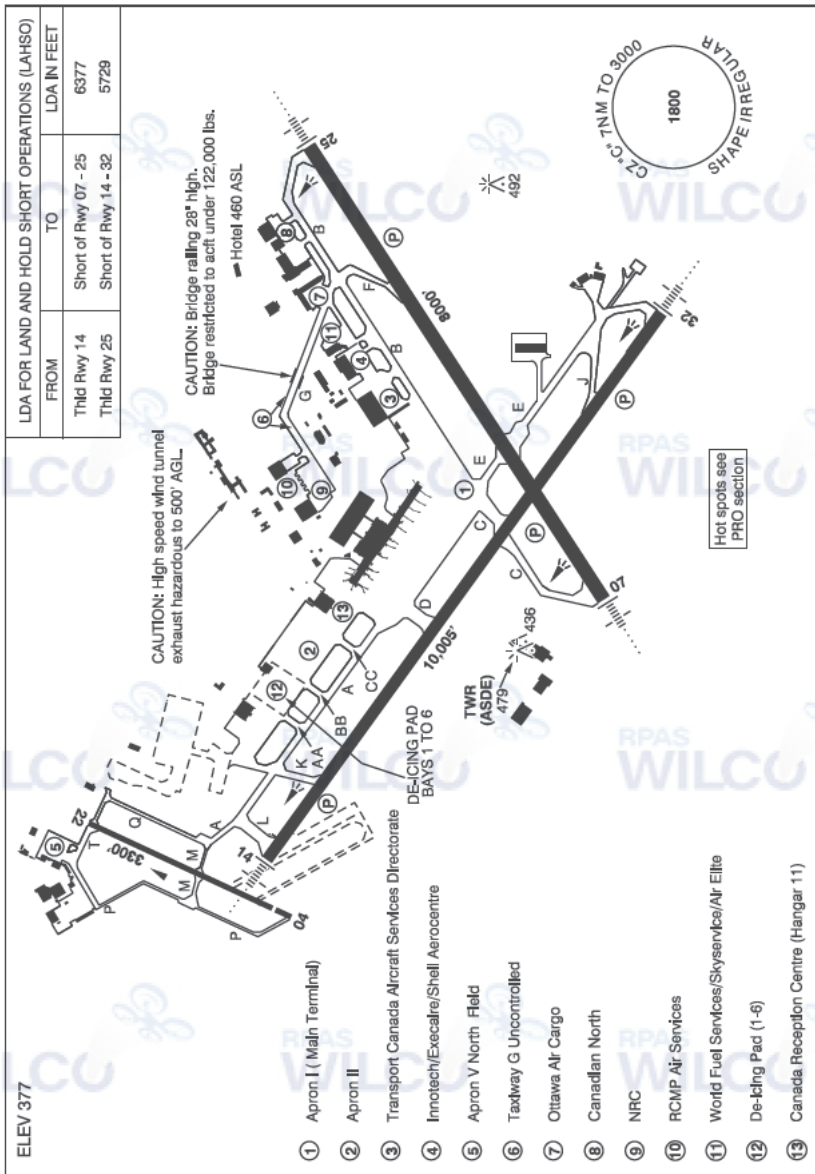
OTTAWA (WINCHESTER DISTRICT MEMORIAL HOSP) ON (Heli)

CWH4

REF	N45 05 17 W75 21 16 Adj 14°W (2012) UTC-5(4) Elev 258' A1905 A5000 A5002
OPR	Winchester District Mem Hosp 613-774-2422 Ext 6209 Cert PPR
PF	A-1,2,3,4,5 C-6
FLT PLN	(bil)
FIC	Québec 866-WXBRIEF or 866-GOMÉTÉO (Toll free within Canada) or 866-541-4105 (Toll free within Canada & USA)
HELI DATA	FATO/TLOF 86' x 86' ASPH Safety Area 114' x 114' Max heli overall length 57.7'
RCR	Opr
LIGHTING	RY(LO)
PRO	Arr/dep btwn 247°-253° fr heli, slope 6% (H3), day/night use.

OTTAWA / MACDONALD-CARTIER INTL ON

CYOW



REF	N45 19 21 W75 40 02 Adj S 14°W UTC-5(4) Elev 377' A1905 A5000 A5002 L06 L07 HI5 T2 CAP OC
OPR	Ottawa Macdonald-Cartier Intl Aprt Authority 613-248-2200 H24 Cert
PF	A-1,2,3,6,7 C-4,5

ONTARIO

AERODROME / FACILITY DIRECTORY

OTTAWA / MACDONALD-CARTIER INTL ON (Cont'd)

CYOW

CUST	AOE 888-226-7277 Pilots to call appropriate fixed base opr (FBO) prior to ldg on pvt adv freq & request cust be advised of intended location for clnc. Cust clnc at Apron II 12-05Z± 1 hr PN.
FLT PLN	
FIC	(bil) Québec 866-GOMÉTÉO or 866-WXBRIEF (Toll free wi hin Canada) or 866-541-4105 (Toll free within Canada & USA)
ACC WX	Montreal 514-633-3211 or 800-633-1353, all Flt Plns, IFR tng PPR, Mon-Fri METAR H24
DUAT	TAF H24, issue times: 00, 03, 06, 09, 12, 15, 18 & 21Z. Ottawa Flying Club; World Fuel Services/Skyservice/Air Elite; Innotech/Execaire/Shell Aerocentre
SERVICES	
FUEL	100LL, JA-1
OIL	All
S	1(ltd), 2,3,4(ltd)
ARFF	DESIGNATED CAT 8
SUP FL	LHOX PN, D & A-ice
PVT ADV	Ottawa Flying Club (North Field) 123.35 12-02Z±; Innotech/Execaire/Shell Aerocentre (South Field) 123.0 11-03Z±; World Fuel Services/Skyservice/Air Elite 129.85 10-05Z±, O/T 613-739-3776
MIL CON	Innotech Aviation Services (Shell) 613-736-5959
RWY DATA	Rwy 14(140°)/32(320°) 10,005x197 grooved ASPH Rwy 07(071°)/25(251°) 8000x197 grooved ASPH Rwy 04(039°)/22(219°) 3300x75 ASPH Thld 04 displ 250'. Rwy 04 down 0.36%. Rstd to acft not exceeding 60,000 lbs. RESA: 07/25 984'; 14/32 1000' Abv 15°C, no acft with more than 100 pax or over 85,000 lbs is auth to perform 180° turns on any rwy without perms 613-248-2013
RWY CERT	Rwy 14 RVR 1200(1/4sm)/Rwy 32 RVR 1200(1/4sm) AGN V Rwy 07 RVR 1200(1/4sm)/Rwy 25 RVR 1200(1/4sm) AGN V Rwy 04/22 AGN II
TWY CERT	Twy: M, P, Q, T AGN II
TWY	Twy G uncontrolled
APRON	Twy M, P, Q and T rstd to acft not exceeding 60,000 lbs De-icing Bays Bay 1, 3, 4, 6 - May be used by acft with wingspans 36m (118') or less Bay 2 - May be used by acft with the wingspans 65m (213') or less. If CC/K used, he Taxi must be on the West taxi line only with crossover to/from Bay 2. Bay 5 - May be used by acft with the wingspan 80m (262') or less. If CC/K used, taxi must be on the west taxi line only with crossover to/from Bay 5.
RCR	Opr CRFI. PLR/PCN
LIGHTING	07-AN(TE HI) P3, 25-AN(TE HI) P3, 14-AN(TE HI) P3, 32-AN(TE HI) P3
COMM	(bil)
RCO	Québec rdo 123.15 (FISE) 126.7 (bcst)
ATIS	(English) 121.15 (French) 132.95
CLNC DEL	Ottawa 119.4 all dep acft to ctc clnc del
GND	Ottawa 121.9
TWR	Ottawa 118.8 (VFR South) 120.1 (VFR North) 118.8 341.3 (V) (emerg only 613-248-3814)
TML	Ottawa 127.7
ARR	Ottawa ARR 135.15
DEP	Ottawa DEP 128.175

ONTARIO

AERODROME / FACILITY DIRECTORY

OTTAWA / MACDONALD-CARTIER INTL ON (Cont'd)

CYOW

NAV

NDB OW 236 (L) N45 21 37 W75 33 40
VOR/DME YOW 114.6 Ch 93 N45 26 30 W75 53 49 (482')
DME IOW 109.5 Ch 32 N45 18 50 W75 40 01 (398')
ILS IOW 109.5 (Rwy 07) RVR LOC reliable only within 10° either side of centreline;
 IRP 110.3 (Rwy 32) RVR LOC reliable only within 10° either side of centreline.

PRO

Pilots should refer to Canadian Airport Charts (CAC) to obtain details on established hot spots, prior to operating on maneuvering areas. CAC are available for free on the NAV CANADA website.

ATC:

IFR CLNC ACKNOWLEDGEMENT: IFR clnc read back with Ottawa twr clnc del shall include acft call sign, assigned SID name and transponder code.

CIRCUITS: Rgt hand circuits Rwys 07, 14 & 22 (CAR 602.96).

FOD: The grade of sand which is used extensively on the aprt dur win may pose a FOD hazard to some acft. Formations and other line astern fit ops should adopt pro to avoid ingestion.

NOISE ABATEMENT PROCEDURES: Turbojet and turboprop acft; refer to CAP; propeller acft: dep Rwy 32 to 1500 ASL before proceeding on crs. Circuit hgt 1500 ASL Rwys 04-14 to maintain 1500 ASL, wx permitting, until established on final apch. Tng fit permitted 0815-2359 lcl time, no VFR tng circuits on Rwy 14/32 below 1500 ASL, no practice rwy pro to Rwy 14.

For practice IFR apchs to active IFR rwys dur peak hrs 1315-1400Z† & 1930-2400Z† Mon-Fri, ctc Montreal Flight Planning 514-633-3211 or 800-633-1353, for possible delays & rwy info.

Turbo-jet take-off and landing not permitted Rwy 04/22.

WEST VFR ARR/DEP ROUTES:

DEPARTURES: SEE OTTAWA M.-C.I. WEST VFR DEPARTURE PROCEDURES CHART

Unless otherwise instructed by ATC contact North Tower on 120.1 when ready,
 – Bells Corners Departure (Depart Rwy 22), climb rwy hdg to Rideau River remaining north of Rwy 25 centerline at all times, at Rideau River, turn rgt hdg 250, climb to 1300 ASL. At 1300 ASL, continue climb not abv 1500 ASL direct Bells Corners and then to Constance Lake.

- Contact Ottawa Terminal on 127.7 at Bells Corners

– Champlain Bridge Departure (Depart Rwy 04), left turn direct Champlain Bridge then to Deschenes Quarry climb not abv 1500 ASL.

- Contact Ottawa Terminal on 127.7 at the bridge

All other VFR acft should anticipate dep instructions from ATC.

ARRIVALS: SEE OTTAWA M.-C.I. WEST VFR ARRIVALS PROCEDURES CHART

– Rwy 22, proceed via E side of Ottawa River to Deschenes Quarry & then direct Champlain Bridge at 2000 ASL.

– Rwy 04, proceed via W side of Ottawa River to Constance Lake, then direct Bells Corners at 2000 ASL.

All other VFR acft should anticipate arr instructions from ATC.

DE-ICING OPERATIONS

1. Ctc PAD CONTROL on 122.925 30 min prior to dep if de-icing is rqrd. Notify of any special treatments prior to taxi to CDF.

2. Ctc Ottawa GND after pushback for taxi to CDF.

3. Hold short of the CDF on K, AA, BB or CC and ctc PAD CONTROL for further taxi.

4. Follow instructions and electronic sign boards to de-icing bays.

5. Stop on the 2nd (illuminated) yellow stop bar, immediately set brakes and advise PAD CONTROL. DO NOT MOVE ACFT. This will allow positioning of trucks while you configure your aircraft.

6. Once instructed switch to ICEMAN on 122.350, confirm brakes are set, confirm treatment and that acft is configured for treatment (engines at idle/props feathered/pacs off). If you can't reduce engines to idle ICEMAN must know, de-icing may not be possible with running engines.

7. After de-icing, configure acft for taxi, however, DO NOT MOVE ACFT.

8. Once instructed, ctc PAD CONTROL for taxi.

9. Follow instructions to designated exit point. Holding short of Twy A, ctc GND 121.9

ONTARIO

AERODROME / FACILITY DIRECTORY

OTTAWA / MACDONALD-CARTIER INTL ON (Cont'd)

CYOW

VFR FLIGHTS IN OTTAWA MACDONALD-CARTIER CLASS C CZ AND TCA TERMINAL.

In order to minimize delays, ATC frequency congestion and for better airspace management, as well as to improve safety, a procedure is available allowing VFR aircraft to obtain a transponder code prior to take off. This mandatory procedure applies to VFR aircraft that did not file a flight plan or flight itinerary with Nav Canada and wishing to penetrate or operate in the Ottawa/MacDonald-Cartier Class C and terminal Class C airspace. All acft not respecting mandatory transponder code procedure will not be accepted in Ottawa/MacDonald-Cartier Class C CZ and TCA C airspace.

To obtain a transponder code:

A discrete transponder code shall be obtained at least 30 minutes prior to the flight taking off toward Ottawa/MacDonald-Cartier Class C CZ and TCA airspace, by contacting the Montreal ACC at 866-VFR-CODE (866-837-2633), or the FIC at 1-866-GOMETEO or 1-866-WX BRIEF, and providing ATC with flight information. Aircraft departing CYUL, CYJN, CYHU, CYOW, CYMX or CYND will obtain their transponder code from the Control Tower or FSS.

Flight procedure:

1. Set your transponder to the assigned code prior to your first communication with ATC.
2. To the extent possible, ctc ATC at least 5NM prior to entering Ottawa/MacDonald-Cartier Class C and terminal Class C airspace.

OTTAWA CZ AIRSPACE SPLIT FOR VFR FLIGHTS

YOW CZ is divided into two sectors with separate frequencies.

Contact OTTAWA TWR on 120.1 when North of Rwy 07/25 extended centreline and OTTAWA TWR on 118.8 when South of Rwy 07/25 extended centreline or on final for Rwy 07/25. Holding short of Rwy 04/22, contact OTTAWA TWR on 120.1 when ready for take-off.

CAUTION

Migratory birds in vic of aprt Mar-Apr, Sep-Oct.

ONTARIO

AERODROME/FACILITY DIRECTORY

OTTAWA / EMBRUN ON

CPR2

REF	N45 14 28 W75 17 55 2SW 14°W UTC-5(4) Elev 230' A1905 A5000 A5002	
OPR	Embrun Airpark Inc. / Serge Boucher 613-443-1469 Reg Ltd hrs	
PF	B-1 C-2,3,4,5,6	
FLT PLN	(bil) FIC Québec 866-WXBRIEF or (French) 866-GOMÉTÉO (Toll free within Canada) or 866-541-4105 (Toll free within Canada & USA)	
RWY DATA	Rwy 08/26 2260x50 turf	
RCR	Opr No win maint	
COMM	ATF Embrun tfc 123.2 5NM 3200 ASL excluding the airspace that lies within Ottawa TCA class C airspace.	
PRO	VFR Codes: In order to minimize delays, ATC freq congestion and for better airspace management, as well as to improve safety, ctc the Montreal ACC at 866-VFR-CODE (866-837-2633), or the FIC at 1-866-GOMETEO or 1-866-WX BRIEF, to provide ATC with info pertaining to your flt to obtain your transponder code at least 30 min prior to a flight into Ottawa Class C airspace.	
CAUTION	Three twrs: 547 ASL aprx 2.5NM NNW, 560 ASL aprx 1.5NM NNW & 580 ASL aprx 5NM NNW of aprt. P-line 35', aprx 700' fr thrd Rwy 26. P-line 30', aprx 600' fr thrd Rwy 08. Lgtd wind turbines to 948 ASL (657 AGL) aprx 2.5NM SE of A/D.	